



YANMAR

MINI-EXCAVATOR

SV22

2120 / 2260 kg





COMPACTNESS

THE SV22 HAS BEEN DESIGNED TO MEET ALL YOUR REQUIREMENTS, AND THIS WHILE EXECUTING THE MOST COMPLICATED JOBS. COMPACT AND LIGHTWEIGHT, IT CAN EASILY BE TRANSPORTED ON A TRAILER. ITS STABILITY AND POWER ENABLE IT TO WORK EFFECTIVELY REGARDLESS OF THE DIFFICULTY OF YOUR JOBSITE. THE SV22 IS INTENDED FOR A WIDE RANGE OF APPLICATIONS SUCH AS URBAN RENEWAL, GRADING OR LANDSCAPING.



COMPACTNESS AND VERSATILITY

The Yanmar SV22 mini-excavator with ultra-short swing radius provides easy access and works in the tightest spots. It provides a power and an exceptional productivity which, associated to an excellent stability, allow you to work with confidence in all circumstances. It is ideal for urban work (no obligation to block 2 traffic lanes) and for landscaping.

COMPACT SIZE FOR EASY TRANSPORT

A transportation weight of only 2045 kg* and a very compact undercarriage enable the SV22 to be transported with its accessories on a trailer. Loading and transfer from one site to another is facilitated which improves your daily productivity. 4 anchor points facilitate the fixation of the machine during transport.

* Canopy version





HIGH PERFORMANCE

Based on our unique experience and expertise, Yanmar technology ensures excellent performance while respecting the environment. The optimal combination of the SV22 excavation strengths and its work cycles assures exceptional productivity.

Flow-Sharing closed-center hydraulic system

The SV22 hydraulic circuit is characterized by the proportional distribution of the flow rates. The variable flow pump and the load sensing closed center circuit guarantee precision, flexibility, power and perfect simultaneity of movements. This system allows the operator to perform all movements with an excellent performance, regardless of the flow rate or the load. The joysticks are very easy to handle and makes operator control of the machine's work even easier.

Exceptional stability and lifting strength

The combination of a wide counterweight, asymmetric crawlers (system patented by Yanmar VICTAS®), and excellent weight distribution provide the SV22 with an impressive level of stability and exceptional lifting capacities. The VICTAS® system consists in increasing the bearing surface by increasing the track path and using asymmetric crawlers. It provides increased lateral stability and lifting capacity, reduced track wear and quiet, vibration-free movement.

A powerful engine that remains respectful of the environment

The YANMAR TNV engine has been designed to combine high power and cleaner emissions. With its sophisticated injection system, it meets the European Commission (EC) emission standards. Its quiet operation makes this engine friendly to people and the environment.

Auxiliary hydraulics come standard

A proportional control auxiliary line allows the use of many accessories such as a hammer or an auger. The oil flow rate is adapted to the use of each device. The operator thus has a perfect mastery of the accessories.





COMFORT

Designed to meet the operator needs, the SV22 cab is large and pleasant. The attention paid to the work environment and ergonomics makes you feel comfortable during long days on jobsite. This spacious cabin is equipped with many advanced devices to make your work more efficient.



USER FRIENDLY

The SV22 cab interior architecture has been studied to improve the operator driving position and to facilitate his work, particularly on the long and challenging work sites. The wrist supports are adjustable. The hydraulic control levers are fluid and easy to use. The second gear control knob is located on the blade lever. Ideally located, the control levers offer exceptional movement precision. To optimize control and ergonomics, all work controls are located on the machine's right console.



ABSOLUTE COMFORT ASSURED

Large comfortable cabin

The SV22 cab interior is very spacious for maximum freedom of movement. The large legroom allows the operator to work comfortably for long hours. The entrance, which is also very large, provides easy cab access and exit.

The standard SV22 seat has a comfortable suspension with multiple adjustments and is equipped with a headrest to reduce operator stress and fatigue.

Excellent air circulation

The SV22 has a heater that can work at a pleasant temperature in extreme weather conditions. The vents are placed to ensure a uniform temperature within the cabin and ensure a perfect window demisting.



- 01 Cigarette lighter and ashtray.
- 02 A bottle holder.
- 03 An automatic ceiling light.
- 04 Heater vents.

Standard equipment also includes: several handrails, numerous storage spaces, 2 x 12V external sockets, a coat rack...

SECURITY

Because one is more effective in a safe and secure environment, the safety of the operator and the people working around the machine is one of our priorities. The SV22 has many facilities that allow you to work with full confidence.



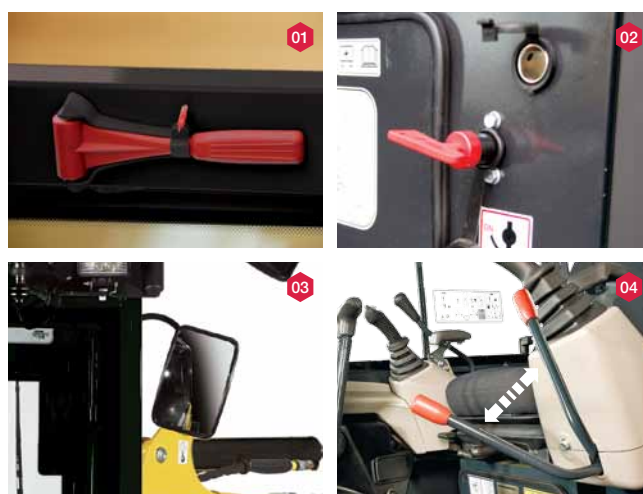
- 01 Evacuation hammer.
- 02 Battery isolator.
- 03 3 rear and side view mirrors.
- 04 Safety lever to access the operating space.

OPTIMUM VISIBILITY FOR EFFICIENT AND SAFE WORK

The SV22 is equipped with 3 rear and side view mirrors. The operator can control the work area as well as the area around the machine without moving from his seat. In order to work efficiently and accurately in darkness, the SV22 comes with a standard LED light positioned in the lower part of the boom, where it is protected from shocks. The LED technology provides a powerful light while reducing energy consumption and increasing the life of the battery. A beacon and 3 additional LED lamps can optionally be added on the cab.

The canopy and the cabin conform to ISO standards

The use of a ROPS structure for the cab guarantees the operator safety in a roll-over. The canopy and cab also conform to FOPS1 standards (concerning structures protecting against falling objects) and TOPS.



DIGITAL INTERFACE: FOR BETTER CONTROL OF THE MACHINE AND GREATER PRODUCTIVITY

The SV22 is equipped with a digital interface that informs the operator in real time on the status of his machine. Perfectly integrated into the right-hand console, the 3.3" screen provides excellent visibility in bright sunlight or at night. This interface allows you to manage working time, daily maintenance operations and to program interventions. It provides useful information on the operation of the machine, such as engine oil and coolant temperatures or fuel level and stores the important events. It also warns the operator in case of malfunctioning of the machine (insufficient battery charge, abnormal oil pressure...).





MAINTENANCE AND RELIABILITY

The SV22 perfectly meets the reputation for quality and durability of the Yanmar machines. The excellent accessibility to components and speed of maintenance and cleaning operations allow achieving excellent levels of onsite availability. Assured of his machine's performance, the operator can calmly work.

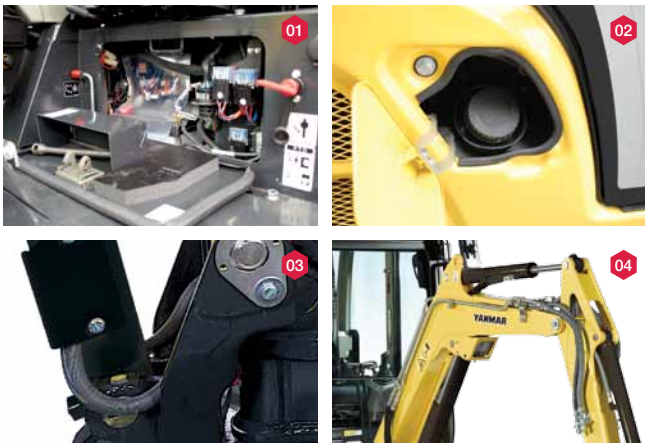
DESIGNED TO LAST

The structure of the chassis, as well as the durable steel covers, provide foolproof resistance. A large counterweight protects against possible shocks and friction against the walls. The hoses are protected with abrasion-resistant sleeves. Their routing on the top of the boom and on the right side of the machine is particularly thought through to avoid the risk of torsion and limiting machine down time. The connections of the cylinders to the blade and the boom are fully protected by steel plates. The cylinders are optionally reinforced by spring steel cover plates. Cationic treatment of the steel parts provides excellent resistance to corrosion for the paint. Form stringers prevent the accumulation of soil and reduce the internal track wear.



EASY MAINTENANCE

Accessibility to service points has been simplified to reduce the maintenance time and cost. The rear and side covers, the panel under the seat and the removable floor provide direct access to the battery, the alternator, the auxiliary circuit selector valve and the electrical components. The blade cylinder flexible is made of two parts for quick replacement in case of perforation.



- 01 Access to the electrical components and the battery under the seat.
- 02 Rubber protection around the fuel filler mouth.
- 03 Hoses protected with abrasion-resistant sleeves.
- 04 Neat passage of tubes and hoses.



YANMAR SERVICES



Our distributors provide you all the solutions you need: advice tailored to your situation, including full-service contracts, spare parts and maintenance.

> FINANCING

The **Y-Finance*** solutions guarantee the most competitive interest rates and help you determine the financing plan that best suits your needs.

* The offerings vary by country.

> WARRANTY

All new Yanmar excavators sold through our authorized network in Europe are protected for 12 months (or 1,000 hours, whichever comes first) by a manufacturer's warranty with an extension of 12 months (or 1,000 hours) for the drive train. We go further by proposing extended warranty contracts "Garantie PLUS" that offer various solutions for long-term coverage.

> PARTS

The original Yanmar parts are designed, tested and manufactured to ensure optimal quality and safety. By systematically using original spare parts, you can be sure to maintain the performance of your machine and avoid future costly repairs due to inadequate parts. You are sure that your machine is kept in perfect condition and you ensure a high resale value.

Original Yanmar parts can be delivered within 24 hours.

> MAINTENANCE

Proximity, speed, quality and reliability are constant concerns for Yanmar dealers. We are committed to your peace of mind and we are committed to your satisfaction. The network of authorized Yanmar repair sites is present in all European countries. You can always find nearby mechanics trained and qualified to care for your machine. Authorized repairers provide contracts and routine maintenance services, perform emergency repairs and provide you with advice adapted to your needs.



EQUIPMENT

> STANDARD EQUIPMENT

Engine

- 3TNV76-SBVA2 Yanmar diesel
- Meets EC standards
- Indirect Injection
- Water Separator

+

Hydraulic system

- LUDV Hydraulic system (Flow sharing)
- 1 auxiliary circuit with proportional control
- 2nd speed
- External hydraulic oil gauge

+

Cabin

- LCD Interface
- Heating
- Adjustable and reclining seat with fabric covers and headrest
- Adjustable wrist support
- Foot rests
- Wide travel pedals
- Windshield with 2 fully retractable parts (only the upper part)
- Sliding double right side window
- Transparent upper front part
- Wipers
- Windshield washer
- Automatic ceiling lamp
- 2 x 12V outlets for the cabin version
- Storage Boxes

- Document storage
- Cup Holder

+

Undercarriage

- 4 anchor points (2 on the undercarriage, 2 on the blade)
- Blade cylinder supply hose into two parts
- VICTAS® asymmetric crawlers

+

Safety

- Handrails
- Safety lever
- Seat belt
- Evacuation hammer
- 3 mirrors
- Travel beep

+

Lighting

- 1 LED light integrated into the boom

+

Miscellaneous

- Fuel gauge
- Protection of the blade and boom cylinders

- Hoses protected by abrasion-resistant sleeves.
- Cataphoresis treated the bodywork and the cabin
- Bonnet and trapdoor of the fuel tank lockables
- System antidrop for trapdoor of the fuel tank
- Toolbox
- Toolkit
- Grease pump

OPTIONAL EQUIPMENT

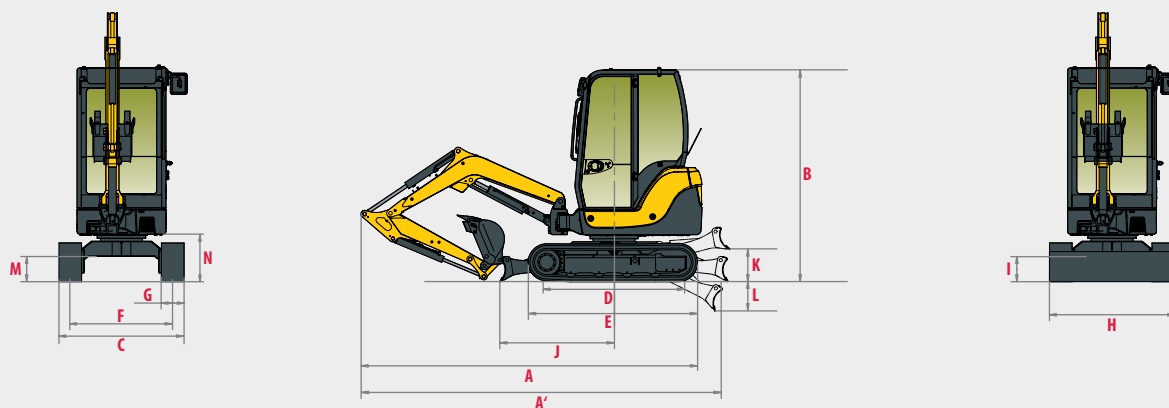
Special paint | Safety valves | Quick couplings | Anti-theft (key/keyboard) | GPS Tracking | Centralised greasing | Cylinder guard | 2 LED frontlights | 1 LED rear light + flashing LED light | Bio oil | Translation alarm | Radio with USB plug and SD card player | Skaï seat

ACCESSORIES

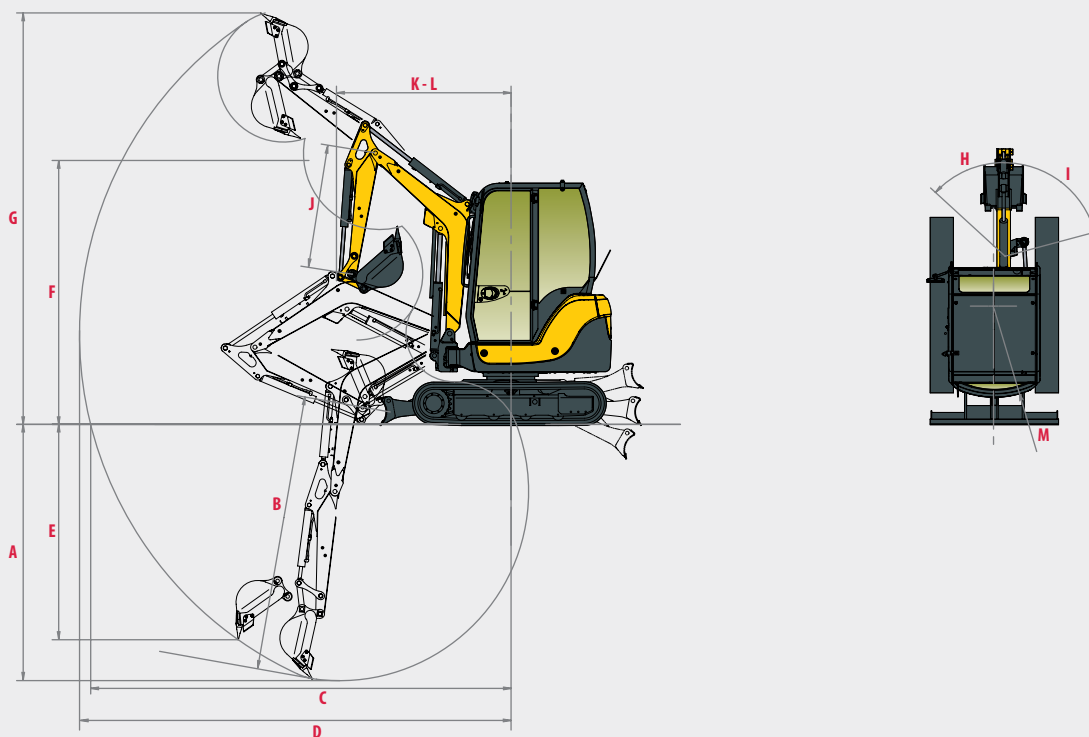
Yanmar gives you the accessories that fit your needs and match the safety standards in force in your country: mechanical quick coupler, ditching bucket, swinging bucket, backhoe bucket, hydraulic hammer...



DIMENSIONS



A » Overall length	3775 mm	H » Overall blade width	1380 mm
A' » Overall length with blade at the back	4090 mm	I » Overall blade height	300 mm
B » Overall height	2320 - 2360 ¹ mm	J » Blade distance	1270 mm
C » Overall width	1380 mm	K » Max. lifting height above the ground	370 mm
D » Length of track on ground	1450 mm	L » Max. lowering depth from the ground	340 mm
E » Undercarriage length	1890 mm	M » Minimum ground clearance	280 mm
F » Lane	1160 mm	N » Ground clearance under counterweight	490 mm
G » Track width	250 mm		



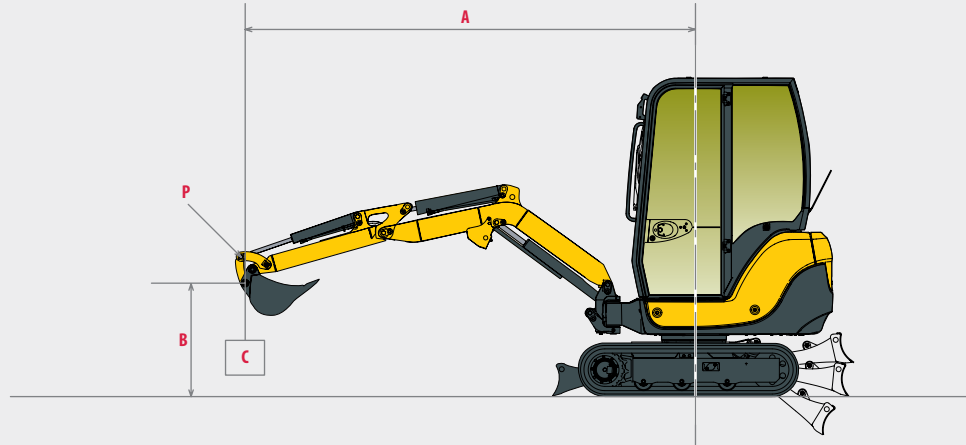
A » Max. digging depth - Blade lifted	2480 mm	H » Boom swinging base to left	40°
B » Max. digging depth - Blade lowered	2650 mm	I » Boom swinging base to right	80°
C » Max. digging reach on ground	4130 mm	J » Arm length	1200 mm
D » Max. digging reach	4240 mm	K » Front swing radius	1700 mm
E » Max vertical wall	2085 mm	L » Front swing radius with boom swing	1460 mm
F » Max. unloading height	2760 mm	M » Rear swing radius	980 mm
G » Max. cutting height	4020 mm		

¹ Canopy – Cabin

Subject to technical modifications. Dimensions in mm with specific Yanmar bucket.



LIFTING FORCE



Tipping load, rating over front



Tipping load, rating over side 90°

Cabin, standard arm																								
Blade on ground							Blade above ground																	
A	Max.	3.5 m	3 m	2.5 m	2 m	1.5 m	Max.	3.5 m	3 m	2.5 m	2 m	1.5 m												
B																								
2.5 m	345	*505	-	-	*470	*490	-	-	-	-	-	-	345	*505	-	-	*470	*470	-	-	-	-	-	-
2 m	340	*500	-	-	*480	*480	*505	*530	-	-	-	-	340	390	-	-	*480	*480	*505	*505	-	-	-	-
1.5 m	320	*505	320	*505	420	*545	*595	*595	*720	*725	-	-	320	345	320	345	420	460	*595	*595	*720	*700	-	-
1 m	300	*515	320	*520	400	*590	520	*700	720	*965	-	-	300	345	320	355	400	450	520	590	720	*965	-	-
0.5 m	300	*525	310	*535	395	*630	495	*795	660	*1125	965	*1405	300	340	310	350	395	445	495	590	660	840	965	1110
0 m	315	*550	315	*550	375	*680	495	*830	670	*1150	1025	*1465	315	355	315	355	375	430	495	550	670	820	1025	1190
-0.5 m	330	*530	-	-	355	*565	505	*735	660	*925	1060	*1410	330	360	-	-	355	385	505	490	660	650	1060	1065
-1 m	390	*530	-	-	-	-	465	*645	700	*840	1000	*1235	390	445	-	-	-	-	465	505	700	680	1000	*1235
-1.5 m	*560	*360	-	-	-	-	-	-	*550	*550	*830	*820	*560	*560	-	-	-	-	-	-	*550	*550	*830	*830

Canopy, standard arm																								
Blade on ground							Blade above ground																	
A	Max.	3.5 m	3 m	2.5 m	2 m	1.5 m	Max.	3.5 m	3 m	2.5 m	2 m	1.5 m												
B																								
2.5 m	340	*505	-	-	375	*490	-	-	-	-	-	-	325	385	-	-	375	*470	-	-	-	-	-	-
2 m	300	*500	-	-	370	*480	430	*510	-	-	-	-	295	335	-	-	370	*480	*505	*505	-	-	-	-
1.5 m	275	*505	275	*505	365	*545	470	*595	*715	*725	-	-	275	295	275	295	365	400	470	505	*720	*700	-	-
1 m	265	*515	275	*520	345	*590	450	*700	650	*965	-	-	255	295	275	305	345	390	450	505	615	745	-	-
0.5 m	260	*525	265	*535	345	*630	430	*795	585	*1125	785	*1405	260	295	265	300	340	380	430	505	555	715	780	855
0 m	270	*550	270	*550	325	*665	420	*830	570	*1150	765	*1465	270	305	270	305	325	370	425	470	565	690	840	940
-0.5 m	285	*530	-	-	305	*565	435	*735	580	*925	915	*1410	280	300	-	-	300	320	435	405	560	525	880	810
-1 m	330	*530	-	-	-	-	400	*645	610	*840	830	*1235	330	380	-	-	-	-	395	420	600	555	815	865
-1.5 m	450	*560	-	-	-	-	-	-	610	*550	*1010	*820	440	445	-	-	-	-	-	-	600	490	*1005	*830

The data in this table represents the lifting capacity in accordance with ISO 10567. They do not include the weight of the bucket and correspond to 75% of the maximum static tipping load or 87% of the hydraulic lifting capacity. Data marked with * are the hydraulic limits of the lifting force.



SPECIFICATIONS



WEIGHT +/- 2% (CE STANDARDS)

	Canopy		Cabin	
Operating weight (rubber tracks)	2120 kg	0.26 kg/cm ²	2260 kg	0.28 kg/cm ²
Transport weight (rubber tracks)	2045 kg	0.25 kg/cm ²	2185 kg	0.27 kg/cm ²



ENGINE

Type	3TNV76-SBVA2
Fuel	Diesel
Net Power	13.4 kW / 18.2 HP / 2200 rpm
Gross Power	13.8 kW / 18.75 HP / 2200 rpm
Displacement	1115 cm ³
Maximum torque	69 N.m. / 1600 rpm
Cooling	Liquid
Starter	1.4 kW
Battery	12 V - 45 Ah
Alternator	12 V - 40 A



HYDRAULIC SYSTEM

Maximum pressure	206 bars
1 piston pump with variable flow	50 l/min

PTO	Theoretical data at 2200 rpm	
	Pressure	Oil flow
	0 ~ 206 bars	45 ~ 17 l/min
	0 ~ 206 bars	45 ~ 17 l/min



Oil flow decreases as the pressure increases



PERFORMANCE

Travel speed	2.4 / 4.1 km/h
Swing speed	9.5 rpm
Digging force (arm)	11.8 kN (1200 kgf)
Digging force (bucket)	18.6 kN (1900 kgf)
Traction force	20.4 kN
Grade ability	30°
Noise level (2000/14/CE & 2005/88/CE)	92 dB(A)
Acoustic pressure at the workstation	80 dB(A)



UNDERCARRIAGE

Number of bottom rollers	4
Track tensioning system	Using grease pump



CAPACITIES

Fuel tank	29 l
Cooling system	4 l
Engine oil	3.9 l
Hydraulic system	32 l
Hydraulic tank	20 l

MAINTENANCE FREQUENCY

Change engine oil and filter: **250 hours** | Change fuel filter: **250 hours** | Change hydraulic oil filter: **500 hours** |
Change hydraulic oil filter: **1000 hours** | Change cooling fluid: **1000 hours**



YANMAR



Printed in France – Materials and specifications are subject to change from the manufacturer without notice – Please contact your local Yanmar Construction Equipment Europe dealer for further information.

Yanmar Construction Equipment Europe S.A.S.

25, rue de la Tambourine
52100 SAINT DIZIER – FRANCE
contact@yanmar.fr

www.yanmarconstruction.eu